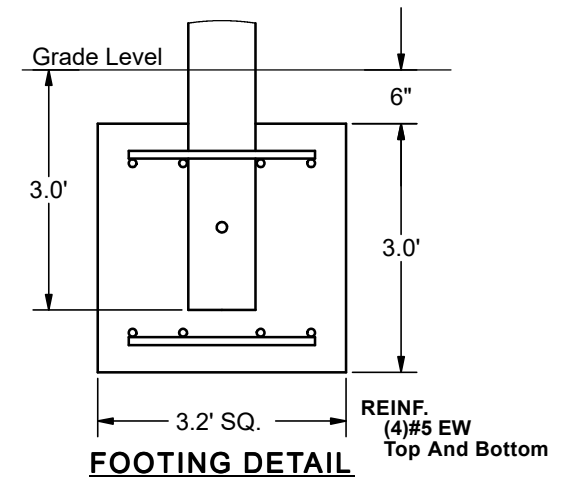
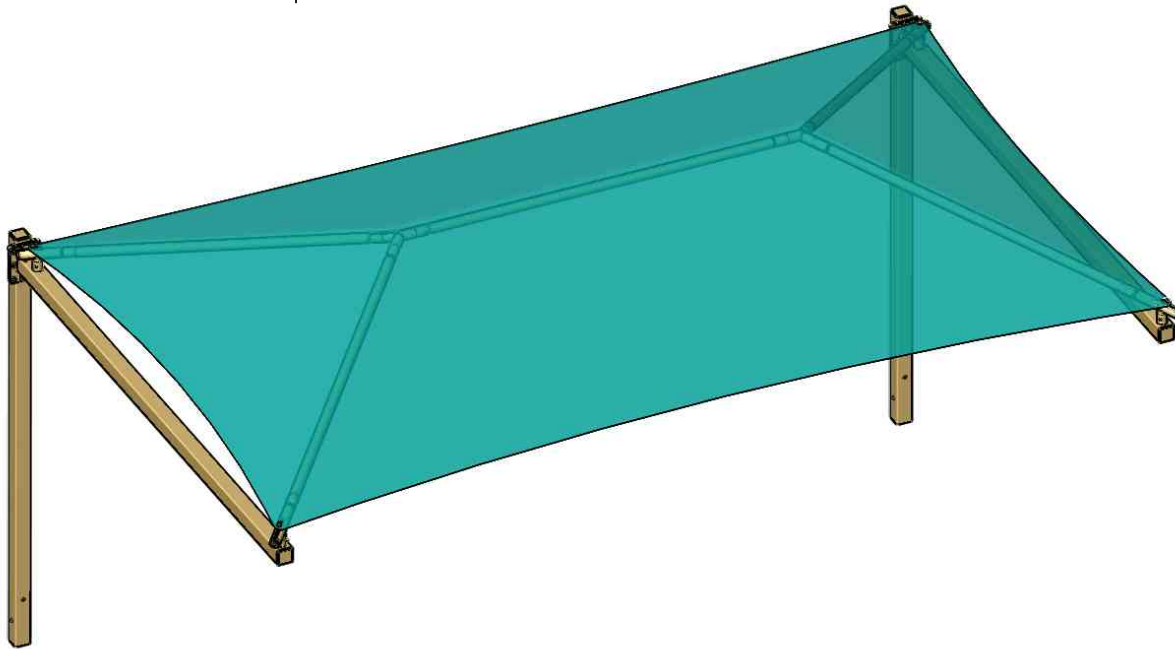
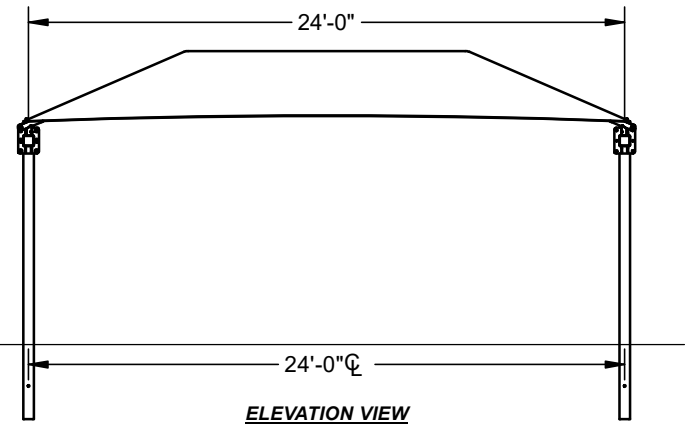
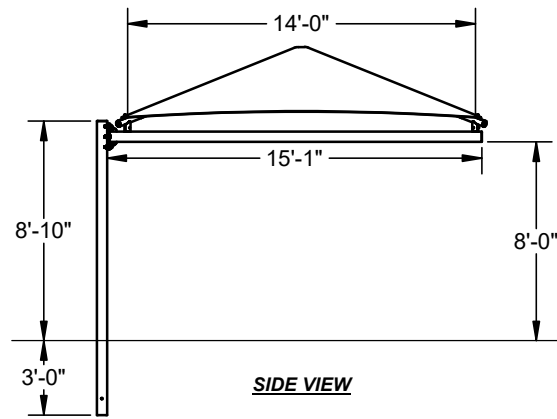


HANGING CANTILEVER SHADE

24' x 14' x 8'

MODEL #:
HC241408IG-105 (With Glide Elbows)

REF.#	PART DESCRIPTION	QTY.
1	6" x 8" EMB Column Flanged	2
2	6" Sq. Beam With Caps	2
3	Ø2 7/8" Angled Elbow	4
4	Ø2 7/8" Hip Rafter w/ Swaged End	4
5	Ø2 7/8" Ridge Pole w/ Swaged Ends	1
6	Ø2 7/8" Rectangle "Y" Connection	2
7	24' x 14' Fabric Cover With Cable Insert	1
8	Frame Hardware Kit	1



*Footing design based on 1500 PSF soil bearing pressure.

CANTILEVER/ CAR PARKING SHADE

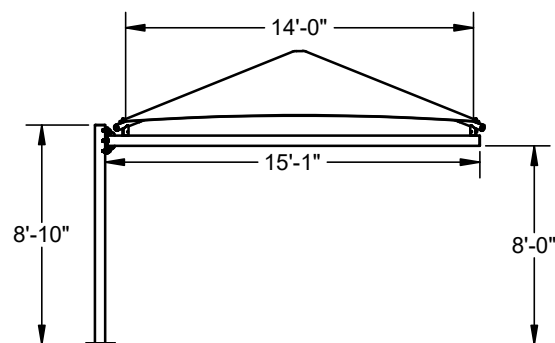
24' x 14' x 8'

MODEL #:

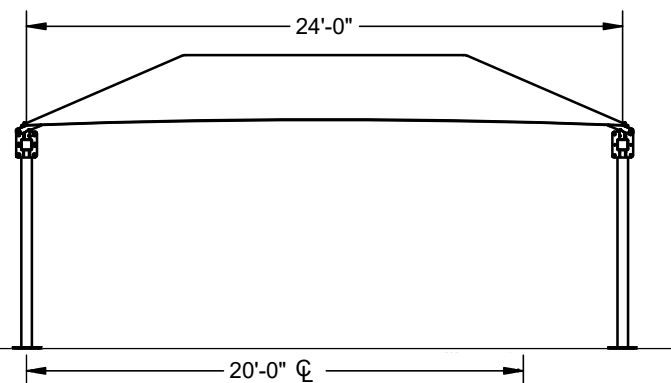
HC241408SG-105 (With Glide Elbows)

HC241408SN-105 (Without Glide Elbows)

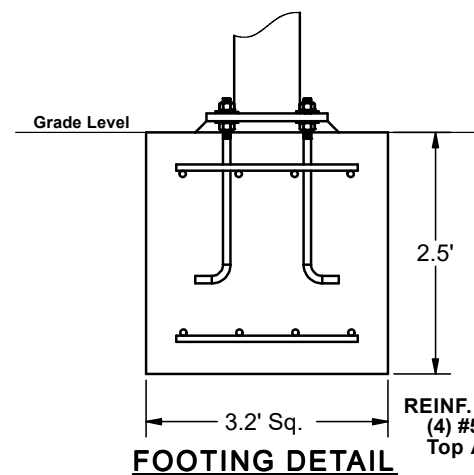
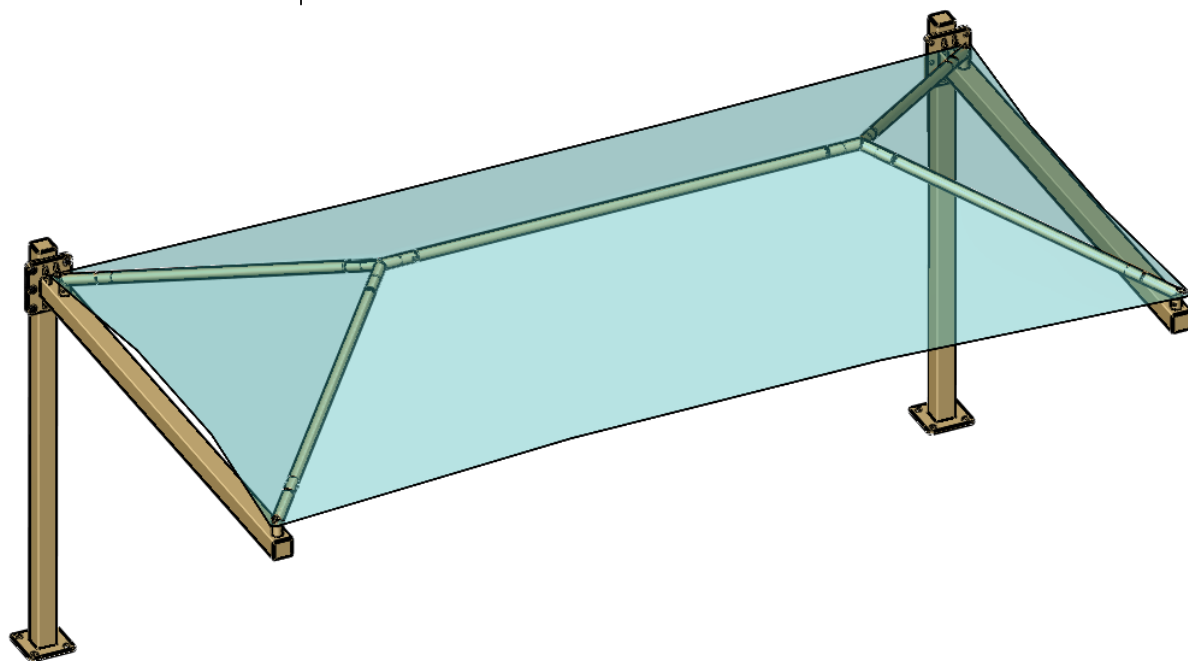
REF.#	PART DESCRIPTION	QTY.
1	6" x 8" EMB Column Flanged	2
2	6" Sq. Beam With Caps	2
3	Ø2 7/8" Angled Elbow	4
4	Ø2 7/8" Hip Rafter w/ Swaged End	4
5	Ø2 7/8" Ridge Pole w/ Swaged Ends	1
6	Ø2 7/8" Rectangle "Y" Connection	2
7	24' x 14' Fabric Cover With Cable Insert	1
8	Frame Hardware Kit	1



SIDE VIEW



ELEVATION VIEW



FOOTING DETAIL

REINF.
(4) #5 EW
Top And Bottom

*Footing design based
on 1500 PSF soil
bearing pressure.