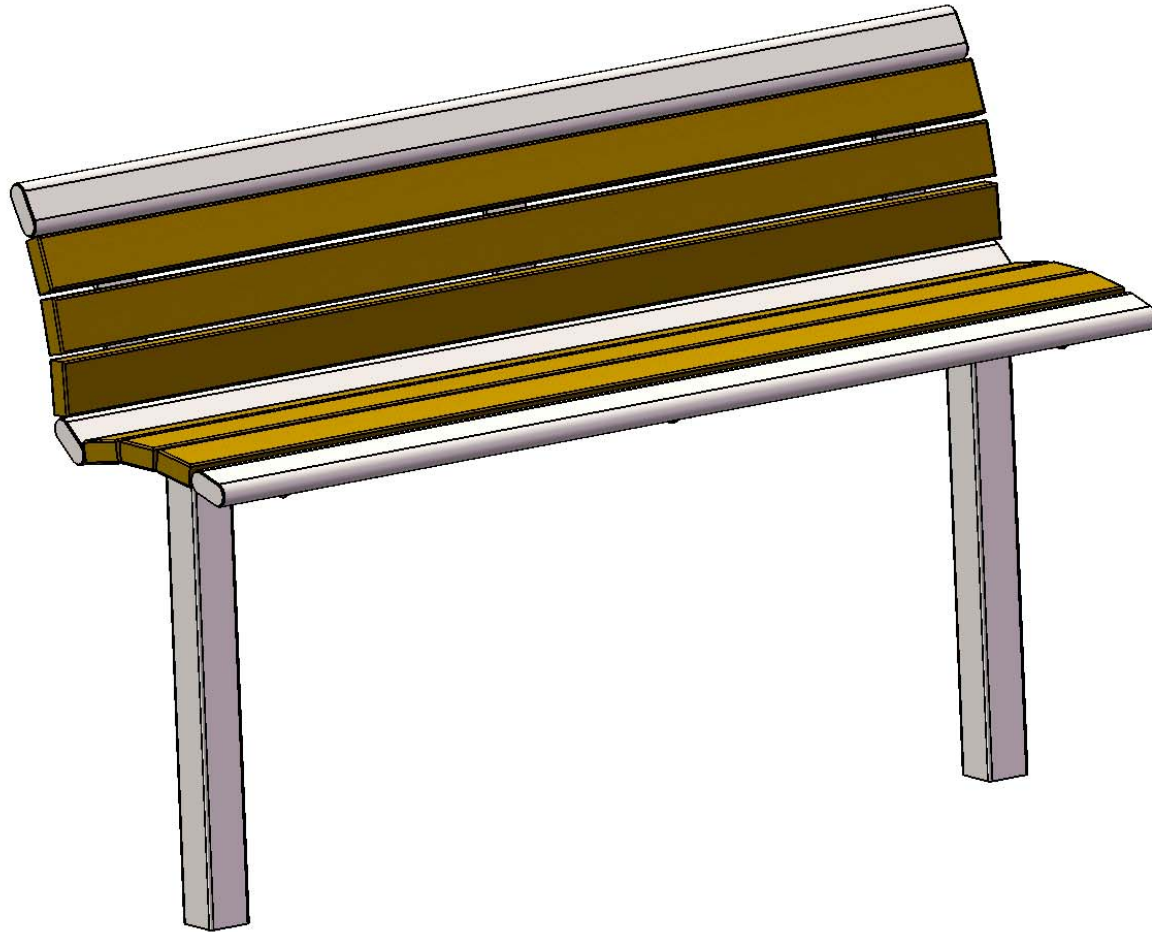
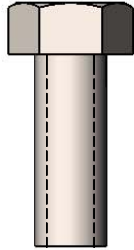


Site Amenities



Model #
B6WBARS-RC

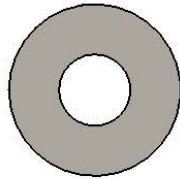
HARDWARE



3/8" x 1"
Machine Bolt
(Zinc)

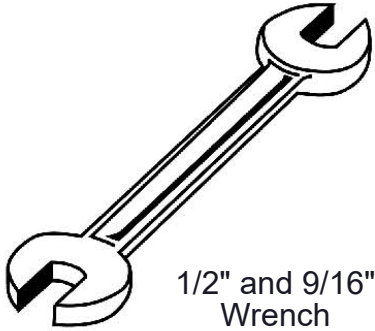


5/16" x 1-1/4"
Lag Bolt
(SS)



5/16" Washer

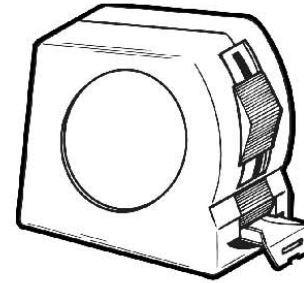
TOOLS REQUIRED



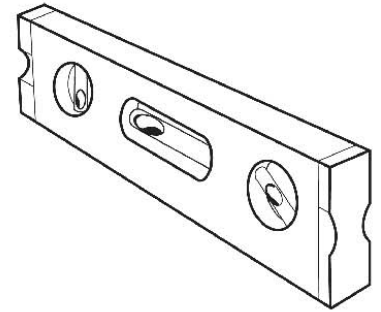
1/2" and 9/16"
Wrench



1/2" and 9/16"
Socket Wrench



Tape Measure



Level

PRODUCT SPECIFICATIONS

B6WBARS-RC ARCHES INGROUND MOUNT BENCH

Seat & Back: 2x4 planks are made from a minimum of 96% post-consumer or post-industrial recycled plastic. Contains UV stabilizers to prevent fading. End Planks are made from 1-1/2" x 3-1/2" Steel Oval Tube.

Frame: 3" x 3" square x 11 gauge structural steel tubing. Seat support is fabricated from 3/16" angle. All electrically MIG welded.

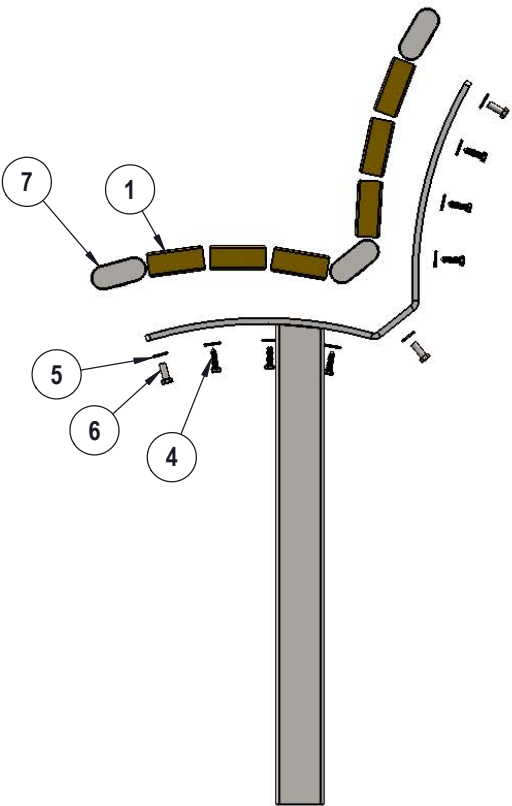
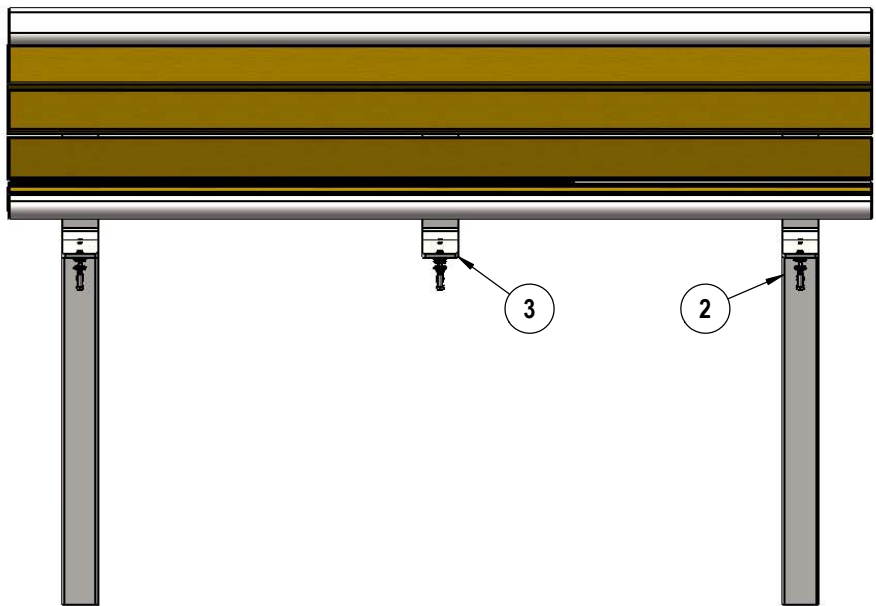
Frame Coating: TGIC electrostatic powder coated application oven cured.

Hardware: All fasteners are stainless steel.

Overall Dimensions: 6' Inground mounted bench with back. Seat is 16" wide x 72" long. Seat height is 18" from the ground to the top of the seat. The overall dimensions are 72" x 20-3/4" x 46-3/4".

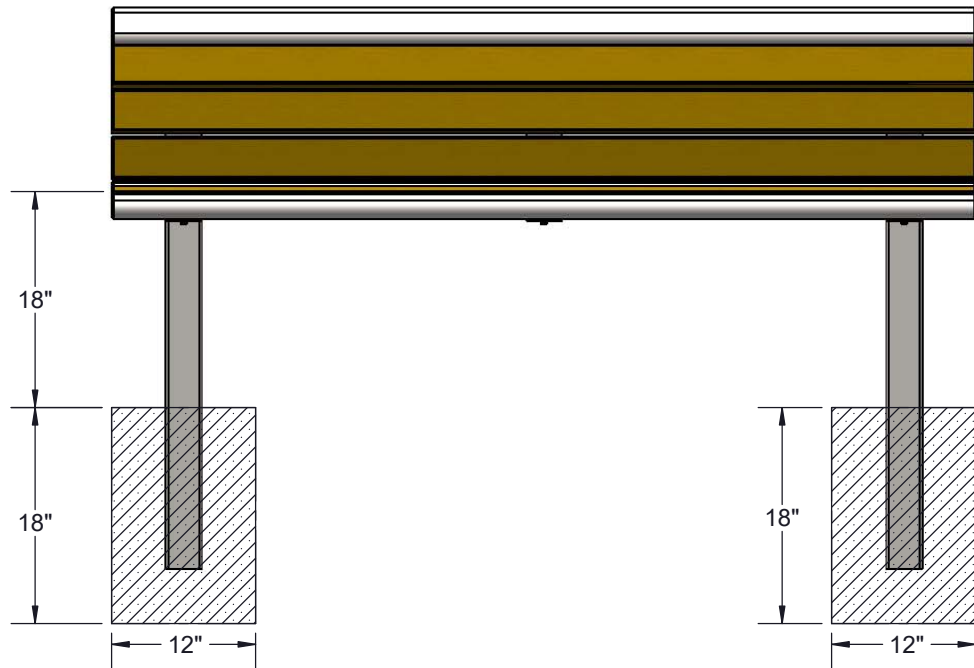
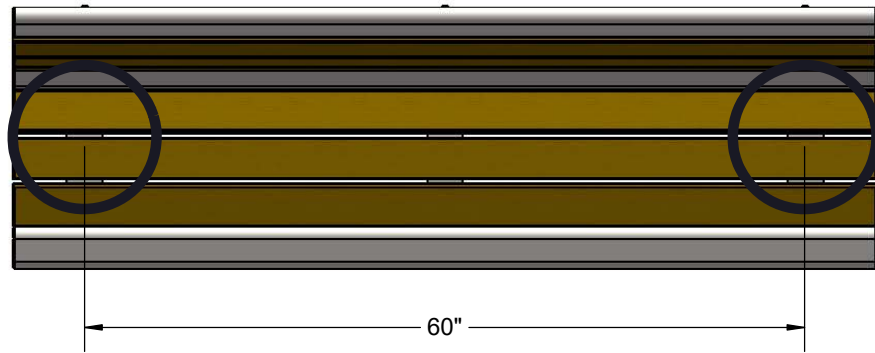
COMPONENTS

Attach the 6' Recycled and Steel Planks to the frames using specified hardware.



| ITEM NO. | PartNo | DESCRIPTION | Qty. |
|----------|---|---|------|
| 1 | BRN72-2x4-LB, CDR72-2x4-LB, GRN72-2x4-LB, or GRY72-2x4-LB | 2 x 4 Brown Recycled Bench Plank-Lag Bolts (6'), 2 X 4 Cedar Recycled Bench Plank-Lag Bolts (6'), 2 x 4 Green Recycled Bench Plank-Lag Bolts(6'), or 2 x 4 Grey Recycled Bench Plank-Lag Bolts (6') | 6 |
| 2 | P-01-01-0390 | 61 Series S Leg | 2 |
| 3 | P-01-01-0665 | 61 Series Bommerang | 1 |
| 4 | 33-05-0034 | 5/16" x 1-1/4" lag bolt, SS | 18 |
| 5 | 33-02-0008 | 3/8" Flat Washer (SS) | 27 |
| 6 | 33-06-0056 | 3/8" x 1" Machine Bolt (SS) | 9 |
| 7 | 01-01-0664 | 6' Oval Tube | 3 |

FOOTING DETAILS



Estimated Required Concrete:
7 - 50lb Bags of Concrete Mix

OVERALL DIMENSIONS

